

Subject:	Crime trends and performance in Brighton & Hove - Position up to August 2011		
Date of Meeting:	10 October 2011		
Report of:	Strategic Director Communities		
Contact Officer:	Name:	Ruth Condon	Tel: 29-1103
	E-mail:	ruth.condon@brighton-hove.gov.uk	
Key Decision:	No		
Wards Affected:	All		

FOR GENERAL RELEASE**1. SUMMARY AND POLICY CONTEXT:**

- 1.1 This report describes recent activities and progress relating to priority areas in the [Brighton & Hove Community Safety, Crime Reduction and Drugs Strategy 2011-14](#). It refers to some recent activities and also provides statistical updates relating to the 5 months of 2011/11, ie. April to August 2011 (or the most recent available).
- 1.2 Graphs showing monthly crime data going back to April 2007 are also provided. These enable recent data to be considered in the context of both longer term trends and also seasonal crime cycles (where applicable).

2. RECOMMENDATIONS:

- (1) The Community Safety Forum notes the information provided in this report and are invited to:
- i) Feedback on any developments they may be aware of from their own or their organisation's experience which may help to understand and interpret the police crime data contained in this report.
 - ii) Consider the potential for supporting crime reduction and community safety when their organisations develop and take forward projects.

3. INFORMATION:**Total Police-recorded Crime**

- 3.1 Between April and June 2011 there were a total of 10,500 police recorded crimes, 1.5% fewer than in the same months of 2010/12 but falling short of the 3% reduction target.

Neighbourhoods and Quality of Life

- 3.2 In the first five months of 2011/12, although seasonal increases are evident, there has been a good reduction in police recorded criminal damage (down 3.5%).
- 3.3 Fire service recorded non-accidental fires have also reduced (down 1%) compared with the first five months of 2010/11. These results continue the good progress made in 2010/11. The continued work and maturity of Local Action Teams will help to maintain a sense of local ownership and strong links between local residents and the council, police and other services. During 2010/11 police recorded cycle thefts increased by 13%, but the 2011/12 results up to August are showing a slight decrease.
- 3.4 In response to the problem of night time noise related to the night time economy experienced by residents in some city centre neighbourhoods, joint work is being taken forward with the involvement of Local Action Teams and the Noise Abatement Society to trial new methods of improving relationships between businesses, visitors and residents.
- 3.5 Work has begun to review the partnership's Safe in the City website with the aim of improving access to information about partnership services and to provide on-line reporting.

Drugs Misuse

- 3.6 During 2009 the number of drug-related deaths were recorded as 50, the highest level since 2005. There has been a shift in national and local emphasis towards achieving successful treatment outcomes for those in treatment towards a state of recovery. Latest data (2010/11) show that 35% of those exiting treatment are classed as having completed treatment successfully. This figure is lower than the regional (38%) and national (45%) averages. The CRI Drug Intervention Team (a voluntary organisation which provides services to drug users) has been supporting clients who are at risk of disengaging from drug rehabilitation programmes, and also supporting those who have successfully completed treatment to help them sustain their recovery.
- 3.7 Work in communities by the Community Against Drugs team continues in 5 particular neighbourhoods in the city and the CAD team is also developing an information pack to support families when an arrest related to drugs has been made.
- 3.8 Many repeat offenders are people who misuse drugs, and a high percentage of the crimes they commit are acquisitive crimes. In the first five months of 2011/12 all acquisitive crimes (incl. theft/handling, burglary and robbery) increased by 4.6% compared with the same period in 2010/11. For serious acquisitive crimes (burglary, vehicle crime and robbery) there was a decrease of 6.1%. However, substantial increases have been seen in 'lower level' thefts such as theft from person (up 34%) and shoplifting (up 8.5%).

Alcohol Misuse and Alcohol-related Disorder

- 3.9 Alcohol-related hospital admissions are showing an upwards trend since the beginning of 2010.
- 3.10 The number of police recorded injury assaults has reduced by 20% in the first five months of 2011/12 compared with the same months in 2010/11. This is a very good start against the 3% reduction target, and this builds further on the reduction experienced during 2010/11.
- 3.11 The city's alcohol misuse action plan includes a wide range of work related to the drinking 'culture', availability of alcohol, the night time economy, and alcohol treatment. Early progress includes: i) developing plans to involve the community in looking at the drinking culture in the city, and also carrying out work related to alcohol and the workplace; ii) providing a sound framework on which appropriate and consistent licensing decisions can be made, iii) making links with universities to encourage them to promote a 'better drinking culture' among students and iv) widening the reach of the Alcohol Brief Intervention Service for at risk drinkers.

Anti-Social Behaviour

- 3.12 A question relating to a perceptions of anti-social behaviour has been added to an ongoing telephone survey carried out by the police and this will enable regular monitoring. After the first quarter of 2011/12 3% out of the 371 city residents surveyed reported perceiving an overall measure of ASB as a problem in their local area. The highest levels of perceived ASB related to drunk and disorderly behaviour and litter in the police central district (city centre). For people in the east district, vandalism, drunk/disorderly behaviour and teenagers hanging around were of most concern, while for west district problem issues were reported as vandalism and teenagers hanging around.
- 3.13 A number of problematic street community members have been worked with by the ASB Street Outreach team who have worked mainly in 4 city centre locations. A range of responses have been implemented, including 25 referrals into drug or alcohol treatment. Five ASBOs are currently in place to protect the community from begging and/or street drinking.

Domestic Violence

- 3.14 In the first 4 months of 2011/12 43% of domestic violence crimes were solved/resulted in a detection. This is below the result of 49% during 2010/11. 83% of DV court cases in the first quarter of 2011/12 had a successful outcome. This is an encouraging result, since the final position in 2010/11 was 67%.
- 3.15 The recent use of police head-cams to provide evidence when attending domestic violence incidents should impact positively on domestic violence enforcement processes and increase successful outcomes. Dedicated independent advocacy continues to be provided to victims by Rise to enhance victims' safety and to support them throughout the court process.

- 3.16 The number of cases being referred to the Multi-Agency Risk Assessment Conference which co-ordinates actions to reduce the risk to those at 'high risk' each month has been increasing. The MARAC will therefore be moving to meeting twice a month from October. The longer term aim, however, is for an improved system of earlier intervention across a wide range of agencies so that domestic violence does not escalate to more serious levels.

Sexual Offences

- 3.17 The number of police recorded serious sexual offences in the first five months of 2011/12 was 113, a decrease of 2.6% from the same months in 2010/11. Although a reduction in sexual offences is our aim, we are at the same time looking to increase reporting of sexual crimes and incidents when they happen. In the first 4 months of 2011/12, 23% of serious sexual offences were detected by the police.
- 3.18 As well as increasing reporting, we also aim to increase the chances of the perpetrator being convicted. So far in 2011/12 60% of finalised court cases for (all) sexual offences were successful. The independent sexual violence advocacy service provided by Survivors Network supports the majority of victims who report to the police and whose cases proceed through court. Counselling and support is also provided by services to rape and sexual violence victims who do not report to the police but who need access to ongoing support to aid their recovery from the abuse.
- 3.19 There is planned work to communicate to perpetrators and potential perpetrators that rape and sexual violence is unacceptable and about criminal justice penalties. A particular message will be that alcohol is no excuse for committing rape and sexual violence.

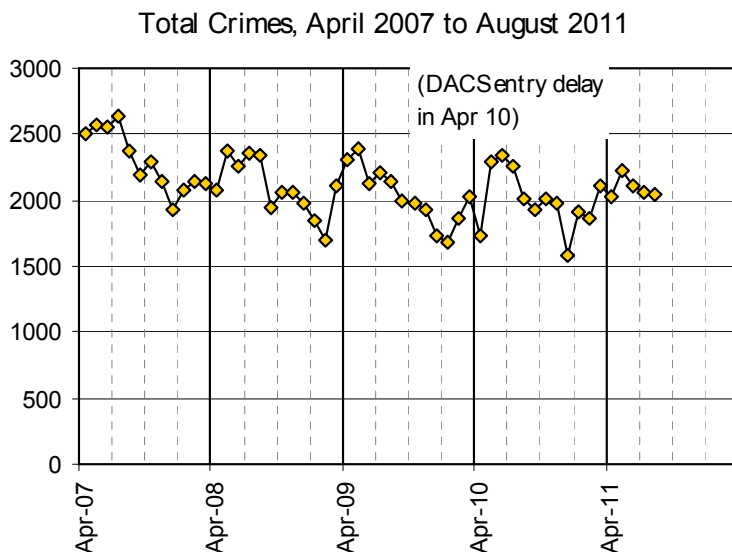
Hate Incidents and Crimes

- 3.20 The number of **racist and religiously motivated incidents and crimes** recorded on both the police database and more widely through the Hate Incident Report Form have continued to decline in the first three months of 2011/12. The number of religiously motivated incidents seem to be low despite international events. Work has been going on to examine racist/religiously motivated incidents in the context of housing and issues will be brought to the attention of appropriate agencies in the next few months.
- 3.21 In the first three months of 2011/12 there have been 17 **LGBT hate incidents and crimes** recorded by the police, 15% fewer than in the same months in 2010/11. 9 crimes have been detected and 7 resulted in a charge being made. So far there have been 3 prosecutions finalised at court and all of these resulted in a conviction. Confidence and satisfaction with statutory services have been identified as important measures of success. There is ongoing engagement across the LGBT community to reinforce and widen input for agreeing these indicators. Outreach work with LGBT PC officers continues to engage with communities across the city, including LGBT youth, specific neighbourhood and PSE environments. The local authority have done some work based on a national best practice report 'Shining The Light:

10 Keys To Becoming A Trans Positive Organisation' and the city's trans communities are developing a resource for online reporting. The city's DV & LGBT DV service providers, partner organisations and supporters are working to ensure the new LGBT DV resources are distributed across frontline services and that training is provided to maximise their impact.

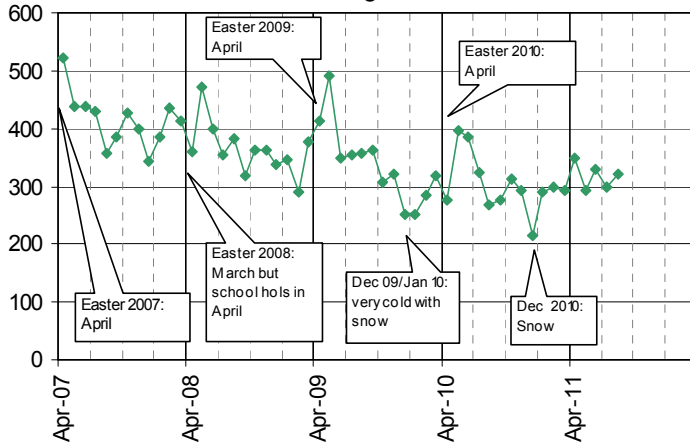
- 3.22 There have been just 2 **disability Hate Incident** Report Forms received in the first quarter of 2011/12. The police have one disability hate crime and one crime related incident during the same period. This is a low number, despite the launch of the publicity campaign involving posters being displayed in targeted locations and additional publicity material being sent to all libraries, GP surgeries, and museums and a wide distribution of reporting forms including easy-read self-reporting forms. There are 16 reporting centres with a list being available on the council's website. The approach taken to encouraging reporting will be reviewed and an apparent under-recording across both statutory and third sector organisations will also be addressed.
- 3.23 The use of community resolution as a disposal for crimes was introduced in April 2011 and in the first three months since then seven racist crimes and one LGBT hate crime were dealt with in that way during this period.

Crime trends up to August 2011



3.24 Total number of crimes over the summer months have numbered between about 2,000 and 2,250 each month, generally lower than last summer.

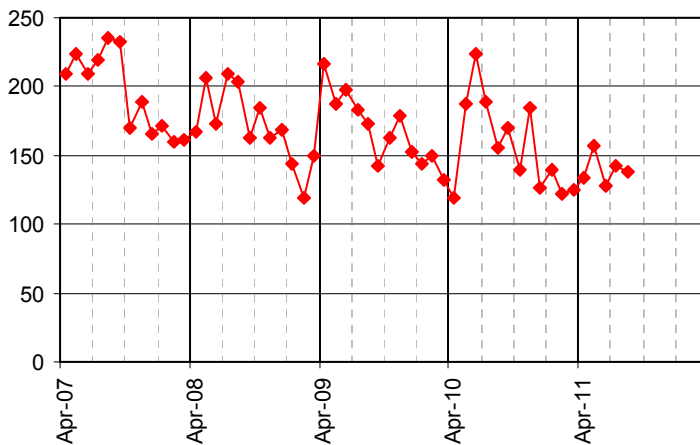
Criminal Damage, April 2007 to August 2011



3.25

The summer months this year didn't experience a peak in criminal damage offences in the same way as has happened in previous years. Monthly numbers have fluctuated between about 300 and 350 per month since April.

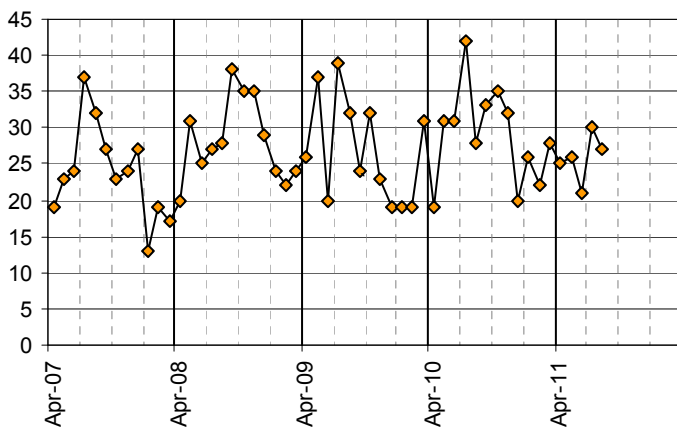
All Injury Violence April 2007 to August 2011



3.26

There has a clear reduction in injury violence offences this summer compared with last year which is very encouraging. This applies to both serious violence and less serious violence.

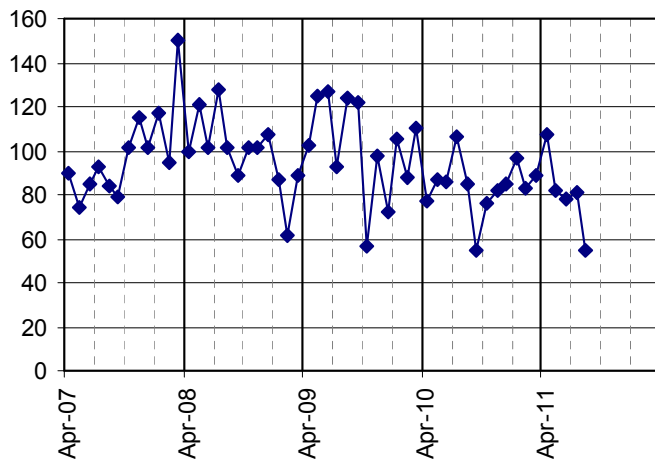
Sexual Offences April 2007 - August 2011



3.27

Number of sexual offences have fluctuated between 20 and 30 per month in the last nine months, although these crimes are likely to be highly underreported. This summer has not seen a particular jump in number as has been experienced in previous years.

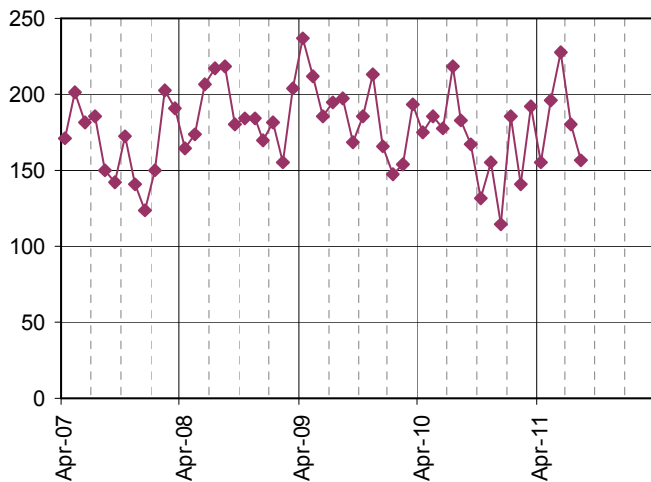
Domestic Burglary, April 2007 to August 2011



3.28

There has been a long term (since Apr 2008) declining trend in domestic burglaries. Although there were signs of a rising number of crimes between Sept 2010 and April 2011, numbers in the subsequent months have declined again and the number in August dropped to 55.

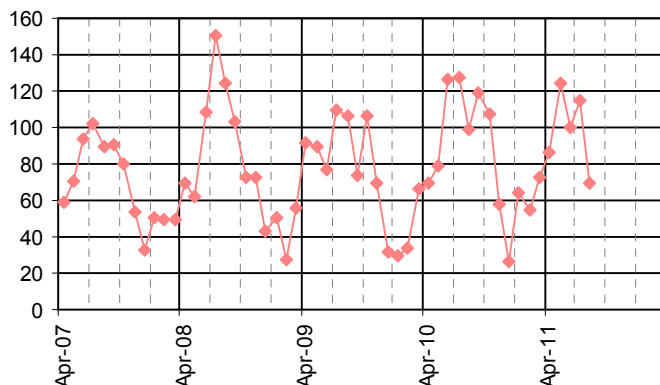
Vehicle Crime, April 2007 to August 2011



3.29

There was a peak in vehicle crimes in June. This was due to a sharp rise in thefts from vehicles during that month. (Thefts from vehicles currently outnumber thefts of vehicles by about 3 to 1.) The current trend in thefts from vehicles is upwards, while that of thefts of vehicles is downwards.

Theft of a Pedal Cycle, April 2007 to August 2011

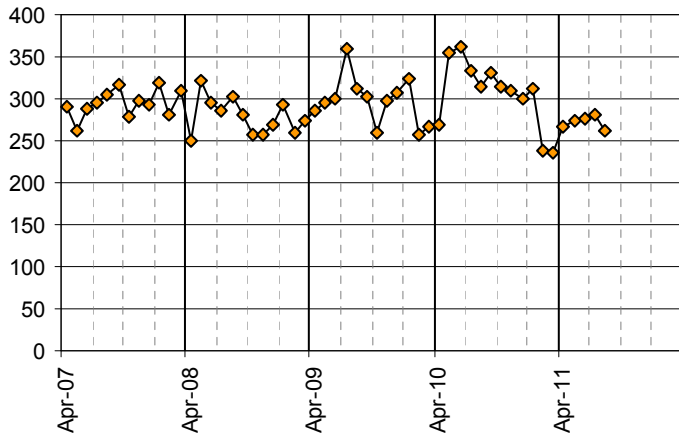


3.30

The numbers of cycle thefts in April and May this year were higher than last year, whereas the situation in the three subsequent months is the reverse (likely to be linked to the weather).

3.31 Police crime data presented in this report only reflect those crimes which are reported and recorded. There is likely to be a level of underreporting in many crime types. However, domestic violence and the hate crimes on this page are particularly liable to underreporting.

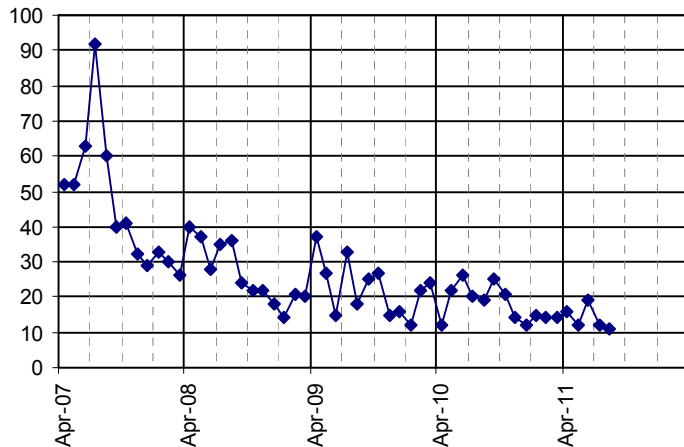
Domestic Violence Crimes and Incidents,
April 2007 - August 2011



3.32

The number of domestic violence crimes and crime-related incidents in the last seven months has been much lower than during most of 2010, and lower than in the same months the previous year.

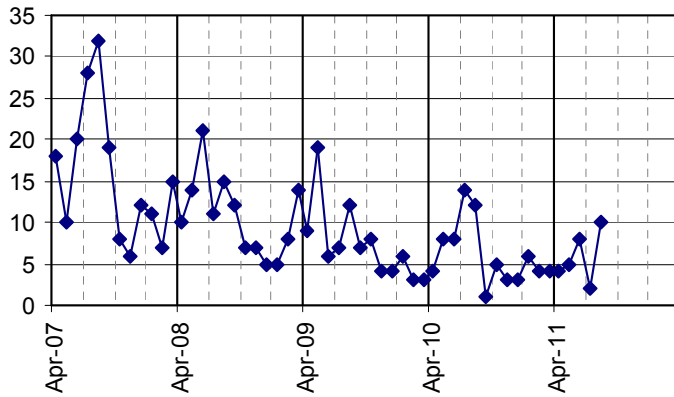
Racist and Religiously Motivated Crimes and Incidents (police crime database),
April 2007 to August 2011



3.33

The declining trend in racist and religiously motivated incidents and crimes appears to be continuing with between 10 and 20 recorded per month over the last ten months.

LGBT Hate Crimes and crime-related Incidents
(police crime database),
Apr 2007 to August 2011



3.34

The number of police-recorded LGBT hate crimes and crime-related incidents and has remained at ten or below over the last twelve months. August saw the highest number (ten) over this period.

Performance data for key crime types, 2011/12

Police recorded crimes	number of crimes Apr 10 – Aug 10	number of crimes Apr 11- Aug 11	reduction target (from 2010/11 baseline)	performance against target to date		rank within 15 benchmarked CSPs ¹
Total Crimes	10642	10486	-3%		not on target	8
Criminal Damage	1649	1591	-5%		not on target	14
Injury Violence ²	874	698	-3%	on target		7 ³
Sexual Offences	151	129	-	-		n/a ⁴
Domestic Burglary	441	403	-	-		2
Theft from/of a Motor Vehicle	939	914	-	-		5
Pedal Cycle Theft	500	494	-	-		7
Domestic Violence Crimes and Incidents	1633	1357	-	-		n/a
Racist/Religiously motivated. Crimes and Incidents	99	70	-	-		n/a
LGBT Hate Crimes and Incidents	46	29	-	-		n/a
Disability Hate Crimes and Incidents	0 (to Jul)	3 (to Jul)	-	-		n/a

¹ A rank of 1 is the best; 15 is the worst

² As defined by Sussex Police

³ iQuanta category 'wounding (serious and other)'

⁴ Because sexual offences, DV and hate crimes are subject to underreporting and local work is being undertaken to increase reporting of these crimes, it is not appropriate to judge performance in comparison with other Community Safety Partnerships based on the number of police recorded crimes.

Note on how Brighton & Hove's performance is compared with other Community Safety Partnerships

For the purposes of assessing the relative performance of the Brighton & Hove Community Safety Partnership (CSP) in reducing crime, our performance is compared (benchmarked) with the performance of 14 other 'Most Similar' CSPs. The Home Office have created these groupings to help provide information on how CSPs, police forces, etc. are performing.

CSPs within a 'Most Similar' grouping have been assessed as having similar characteristics in terms of 24 socio-demographic and geographic variables which are strongly linked to increased levels of crime, fear of crime, or incidents.

We are able to compare our crime trends and current performance with our Most Similar CSPs. The data presented on page 1 of this report (see right-most column of the table) shows our ranked position within this group of 15 CSPs. For example, a ranking of 1 indicates that a CSP is performing best within the group, and a ranking of 8 shows that the CSP is in the middle ranked position.

Other Members of Brighton & Hove's Most Similar CSP Group (from Apr 2010) are as follows:

LB Barnet
Bournemouth
Cheltenham
LB Croydon
Eastbourne
LB Hackney
LB Hammersmith & Fulham
LB Kensington & Chelsea
LB Lambeth
Reading
LB Southwark
LB Wandsworth
Windsor and Maidenhead
Wycombe